

TERTIANUM

Wohn- und Pflegezentrum Rosenau, Bazenheid

Einzelpflegezimmer

Typ ez 1

Wohnfläche 25.5–25.9 m²

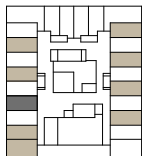
Zimmer Nr. 101/102/**104**/106/
108/116/118/
120/122

Zimmer Nr. 201/202/204/206/
208/216/218/
220/222

Zimmer Nr. 301/302/304/306/
308/316/318/
320/322



1.OG



4.
3.
2.
1.
EG
1.UG
2.UG

